

GLASS POOL LATCHES

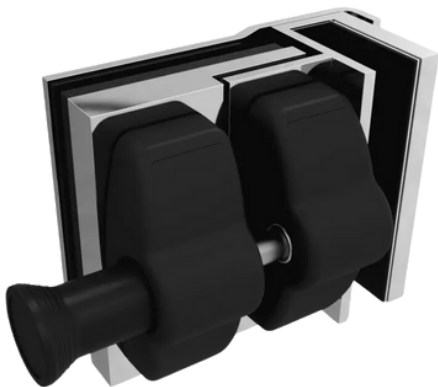


Glass Magna Side Pull Latch 180 deg

Marine grade 316 stainless steel magnetic triggered side pull latch with no visible fasteners with a corrosion resistant latch bolt
Satin, Mirror, White, Black (Polymer)
D & D Vizage and Libra brands available

Glass Maga Side pull Latch 90 deg Inswing

Marine grade 316 stainless steel magnetic triggered side pull patch with no visible fasteners
and a corrosion resistant latch bolt
Satin, Mirror, Black (Polymer)
D & D Vizage and Libra brands available



Glass Magna Side Pull Latch 90 deg Outswing

Marine grade 316 stainless steel magnetic triggered side pull patch with no visible fasteners
and a corrosion resistant latch bolt
Satin, Mirror, Black (Polymer)
D & D Vizage and Libra brands available

Wall/Post to Glass Friction Magna Side Pulled Latch

Marine grade 316 stainless steel magnetic triggered side pull patch with no visible fasteners
and a corrosion resistant latch bolt
Satin, Mirror, White, Black (Polymer)
Suits wall to glass or square post to glass friction latch
D & D Vizage and Libra brands available



POOL LATCHES



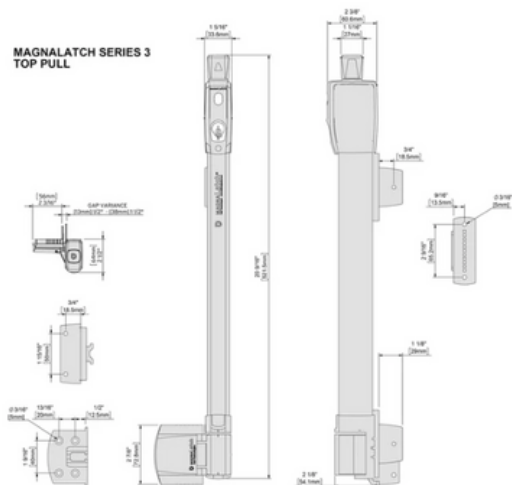
D&D Magnalatch Series 3 Top Pull Series 3 design

Visual indicator shows Locked/Unlocked status.

Meets all Australian and NZ Standards for pool gates.

Latch release knob should be 1500mm above ground level

Australia Made & comes with Lifetime Warranty



D&D Magnalatch Alert Top Pull

Gate latch & Gate alarm in one

Easy installation: no special tools or electricians required

Designed to fit all square post gate applications

Long-life lithium battery included.

At-a-glance Locked/Unlocked indicator.

Visual unlatched alarm and audible unlatched alarm

Meets Australia Standards and is Australian Made

